

# Hospital onset COVID-19 cases in Scotland

Week ending 01 March 2020 to week ending 11 September 2022

A management information publication for Scotland

Publication date: 05 October 2022

## About this release

This release provides data for COVID-19 hospital onset cases in Scotland from week ending 1 March 2020 to week ending 11 September 2022. A system for monitoring COVID-19 is critical to tracking hospital transmission. This helps to inform infection prevention and control measures. The transmission of COVID-19 is thought to occur mainly through respiratory droplets generated by coughing and through contact with contaminated surfaces. [Further information on the epidemiology of COVID-19 in healthcare settings can be found on the Public Health Scotland website.](#)

Due to the cessation of almost all population for SARS-CoV-2 at the end of April 2022, the inclusion of community onset cases in this report has been discontinued.

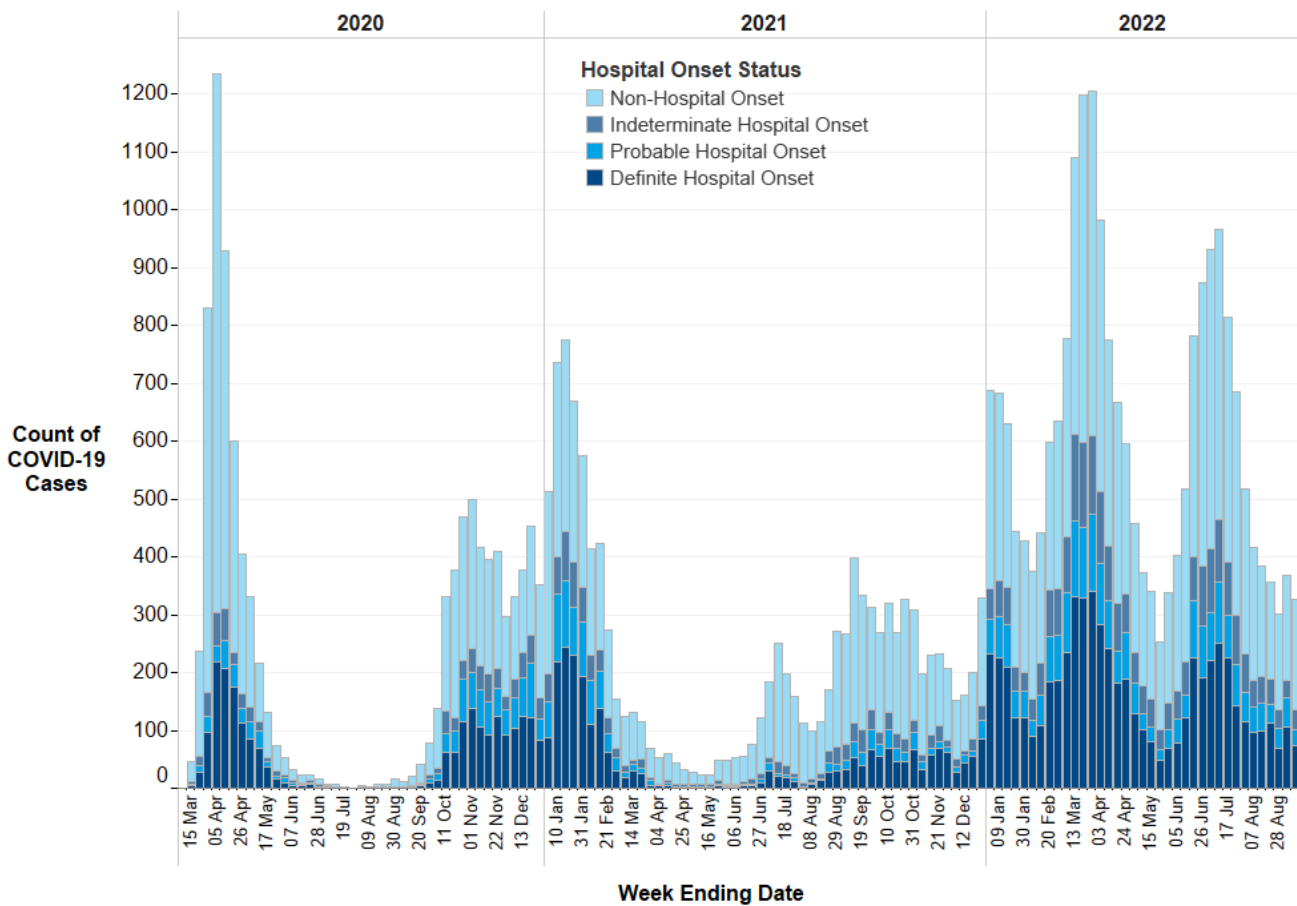
## Main points

### Breakdown of COVID-19 cases by hospital onset status – weekly data

The total number of hospital onset COVID-19 cases reported to ARHAI Scotland this week (week ending 11 September 2022) was 326. Of these:

- 190 (58.3% of all hospital onset COVID-19 cases) were reported as non-hospital onset (first positive specimen of COVID-19 episode on day 1 or 2 of admission to NHS board), of which 28 (14.7% of non-hospital onset cases) were reinfections. In the previous week (week ending 04 September 2022) there were 182 (49.3% of all hospital onset COVID-19 cases), of which 24 (13.2% of non-hospital onset cases) were reinfections.
- 35 (10.7% of all hospital onset COVID-19 cases) were reported as indeterminate hospital onset (first positive specimen of COVID-19 episode on days 3 to 7 of admission to NHS board), of which 6 (17.1% of indeterminate hospital onset cases) were reinfections. In the previous week (week ending 04 September 2022) there were 30 (8.1% of all hospital onset COVID-19 cases), of which 3 (10.0% of indeterminate hospital onset cases) were reinfections.
- 28 (8.6% of all hospital onset COVID-19 cases) were reported as probable hospital onset (first positive specimen of COVID-19 episode on days 8 to 14 of admission to NHS board), of which 1 (3.6% of probable hospital onset cases) was a reinfection. In the previous week (week ending 04 September 2022) there were 51 (13.8% of all hospital onset COVID-19 cases), of which 6 (11.8% of probable hospital onset cases) were reinfections.
- 73 (22.4% of all hospital onset COVID-19 cases) were reported as definite hospital onset (first positive specimen of COVID-19 episode 15 or more days after admission to NHS board), of which 7 (9.6% of definite hospital onset cases) were reinfections. In the previous week (week ending 04 September 2022) there were 106 (28.7% of all hospital onset COVID-19 cases), of which 13 (12.3% of definite hospital onset cases) were reinfections.

**Figure 1: Epidemic curve of COVID-19 cases with first positive specimen of COVID-19 episode taken during an inpatient stay, by onset status: week-ending 01 March 2020 to week-ending 11 September 2022 (n=44,557).<sup>1,2</sup>**



1. Source of data are Corporate Data Warehouse (CDW) that contains test results from Electronic Communication of Surveillance in Scotland (ECOSS) and Rapid Admission Preliminary Inpatient Data (RAPID) or local admission data.
2. Data include any reinfection episodes from samples taken during an inpatient stay in hospital.

## Background

Antimicrobial Resistance and Healthcare Associated Infection (ARHAI) Scotland, part of National Services Scotland, works closely with Public Health Scotland to deliver the COVID-19 response. Local and national monitoring in hospital settings is required to reduce COVID-19 infections.

## Contact

### Shona Cairns

Consultant Healthcare Scientist

Antimicrobial Resistance and Healthcare Associated Infections (ARHAI) Scotland  
 NHS National Services Scotland  
 0141 300 1922

[NSS.ARHAIdatateam@nhs.scot](mailto:NSS.ARHAIdatateam@nhs.scot)

## Further Information

Find out more in the [full report](#) and on the [COVID-19](#) pages on the PHS website. The next release of this publication will be 12 October 2022.