

Hospital onset COVID-19 cases in Scotland

Week ending 01 March 2020 to week ending 09 October 2022

A management information publication for Scotland

Publication date: 02 November 2022

About this release

This release provides data for probable and definite hospital onset COVID-19 cases (first positive specimen of COVID-19 episode taken on day eight of an inpatient stay or later) in Scotland from week ending 1 March 2020 to week ending 09 October 2022. A system for monitoring COVID-19 is critical to tracking hospital transmission and has informed development of infection prevention and control (IPC) measures during the pandemic. The transmission of COVID-19 is thought to occur mainly through respiratory droplets generated by coughing and through contact with contaminated surfaces. Further information on SARS-CoV-2 and current IPC guidance can be found in the [National Infection Prevention and Control Manual](#).

The content of this report has evolved during the pandemic to account for changes in testing for SARS-CoV-2. Due to the cessation of almost all population testing for SARS-CoV-2 at the end of April 2022, the inclusion of community onset cases in this report was discontinued in May 2022. Additionally, following the pausing of almost all routine asymptomatic testing in hospitals at the end of September 2022, the inclusion of non-hospital onset and indeterminate hospital onset cases (cases where first specimen of COVID-19 episode taken on days one to seven of an inpatient stay) has also been discontinued.

Main points

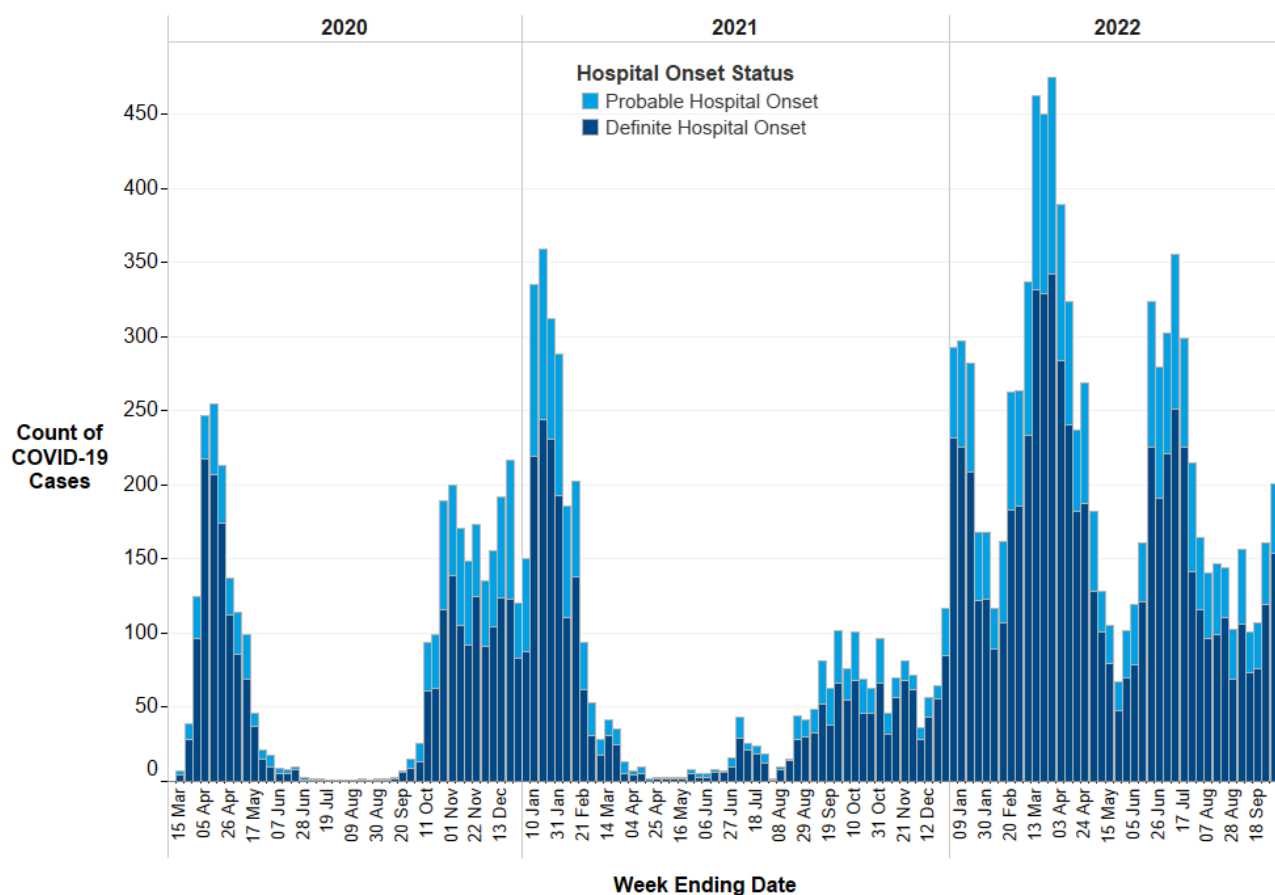
Breakdown of probable and definite hospital onset COVID-19 cases by hospital onset status

– weekly data

The total number of probable and definite hospital onset COVID-19 cases reported to ARHAI Scotland this week (week ending 09 October 2022) was 257. Of these:

- 62 were reported as probable hospital onset (first positive specimen of COVID-19 episode on days 8 to 14 of admission to NHS board). In the previous week (week ending 02 October 2022) there were 47.
- 195 were reported as definite hospital onset (first positive specimen of COVID-19 episode on day 15 of admission to NHS board or later). In the previous week (week ending 02 October 2022) there were 154.

Figure 1: Epidemic curve of probable and definite hospital onset COVID-19 cases (first positive specimen of COVID-19 episode taken on day eight of inpatient stay or later), by onset status: week ending 01 March 2020 to week ending 09 October 2022 (n=16,242).^{1,2}



1. Source of data are Corporate Data Warehouse (CDW) that contains test results from Electronic Communication of Surveillance in Scotland (ECOSS) and Rapid Admission Preliminary Inpatient Data (RAPID) or local admission data.
2. Data include any reinfection episodes from samples taken on day eight of an inpatient stay or later.

Background

Antimicrobial Resistance and Healthcare Associated Infection (ARHAI) Scotland, part of National Services Scotland, works closely with Public Health Scotland to deliver the COVID-19 response. Local and national monitoring in hospital settings is required to reduce COVID-19 infections.

Contact

Shona Cairns

Consultant Healthcare Scientist

Antimicrobial Resistance and Healthcare Associated Infections (ARHAI) Scotland
 NHS National Services Scotland
 0141 300 1922

NSS.ARHAIdatateam@nhs.scot

Further Information

Find out more in the [full report](#) and on the [COVID-19](#) pages on the PHS website. The next release of this publication will be 09 November 2022.