



Domestic Scheduling Tool

**NHS
Lanarkshire**

Belinda O'Shea
Facilities Support Manager

Christina Cox
Domestic Manager

Michael Everden
Programme Manager

Agenda

1. Background
2. Introduction
3. Case Study – Monklands Hospital
4. NHS Lanarkshire perspective
5. Basic functions
6. Next steps
7. Questions



Background

Request from NHS Lanarkshire's Infection Control Committee

A digital system which:

- supports the governance of a clean environment
- removes requirement for paper schedules
- consistent scheduling across the Board
- evidence based for achievement of standards
- status reports to meet governance requirements
- assurance tasks are completed
- operational service delivery
- flexible and controlled by local Board administrator/s



HFS - Lanarkshire

1. collaborative working
2. learning opportunity
3. benefits/challenges for Boards
4. adapting the concept from an operational perspective
5. support mechanisms



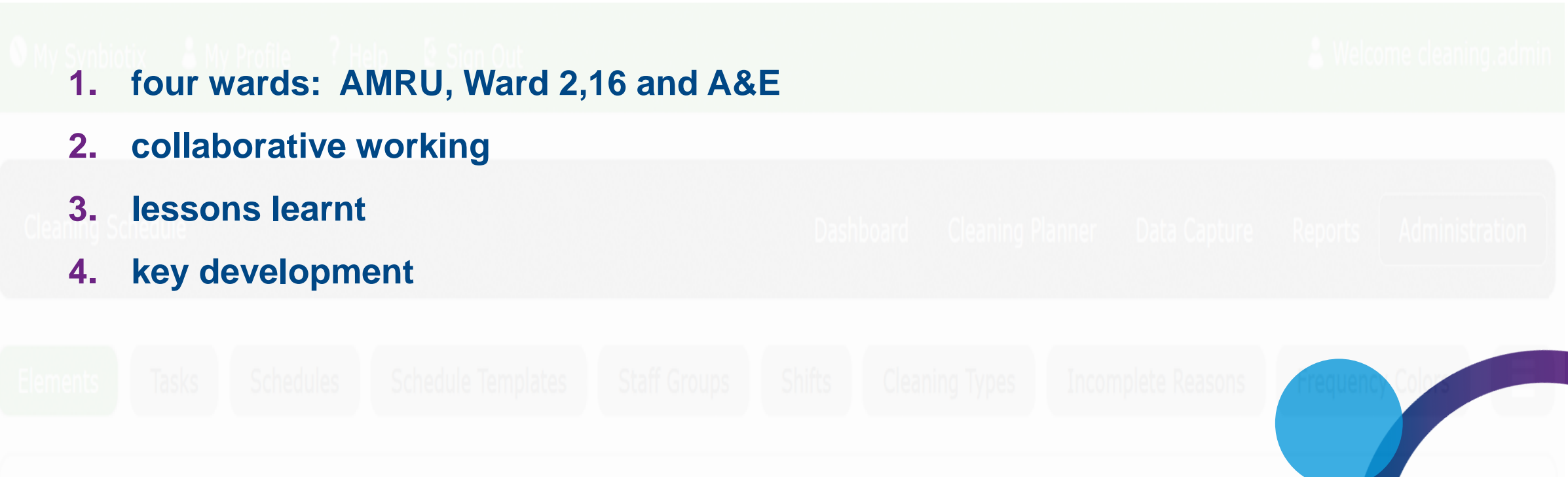
Introduction

The Domestic Scheduling Tool:

1. web-based tool removes the need for paper schedules
2. assurance that the scheduled tasks have been completed
3. schedules auto-generate the required daily tasks
4. data is collated into management information via a dashboard
5. location data from current systems (or stand alone)



Case Study – Monklands Hospital



Outlook 12:46 Thu 20 Oct 57%

Synbiotix : Cleaning Schedule

app6.synbiotix.com

Welcome cleaning.admin

Cleaning Schedule

Monklands Hospital > Ward 02 > ROOM 20 - NE414 > Data Capture

Cleaning Type: Standard Clean - 20/10/2022

Staff Group Domestic

Shift Day shift

Standard Clean Add Additional Clean

COMPLETE SELECT Apply to All

Room Tasks

Task	Move 1 Day	Status
Element: Floors		
D - damp mop/microfibre mopping system		COMPLETE
D - Remove all floor debris		COMPLETE
Element: Furniture/Fittings		
D - Damp clean furniture and fittings including: desk, chairs, cabinets, light switches, pull cords, control panels, shelves, worktops, trolleys, radiators, pipework, ledges, fire extinguishers		COMPLETE
W - In-patient beds - check/clean		COMPLETE
D - Remove debris from furniture and fittings including: desk, chairs, cabinets, light switches, pull cords, control panels, shelves, worktops, trolleys, radiators, pipework, ledges, fire extinguishers		COMPLETE

Element: Glasswork		
D - Clean and dry glasswork/mirrors		COMPLETE
D - Clean and dry mirrors		COMPLETE
Element: Low level		
W - Damp clean low levels including: dado rails, vents, partition ledges, pipes and skirtings		COMPLETE
Element: Paintwork		
D - Damp clean paintwork removing all spots and spillages		COMPLETE
Element: Refuse		
D - Clean bin holders and replace liners		COMPLETE
D - Empty bins, collect and dispose of waste		COMPLETE
Element: Soap/Handtowels		
D - Clean and dry soap and hand towel dispensers and replenish supplies.		COMPLETE
D - Replenish supplies soap and hand towel dispensers		COMPLETE
Element: Telephones		
D - Damp clean telephones		COMPLETE
Element: Toilet/WHB/Sink		
D - Clean and dry sink/wash hand basin, surround, pipes		COMPLETE
Bed Tasks		
Save		

Powered by Synbiotix

B 1 Bed Area/Clinical Clean and Dirty utility areas/Ward corridor and stairs	Mo	Tu	We	Th	Fr	Sa	Su
Empty bins, collect and dispose of waste, clean holders, replace liners	•	•	•	•	•	•	•
Clean high levels including wall surfaces, ledges, window ledges, cabinets, furnishings, pipes, direction signs, curtain rails, partition ledges		•					
Clean and dry sink/wash hand basin, surround, pipes, mirror, soap and towel dispensers	•	•	•	•	•	•	•
Replenish supplies	•	•	•	•	•	•	•
Remove debris and damp clean furniture, fixtures and fittings including: door handles, beds, chairs, over chair tables, light switches, control panels, pictures,	•	•	•	•	•	•	•
Clean all wheels and castors			•				

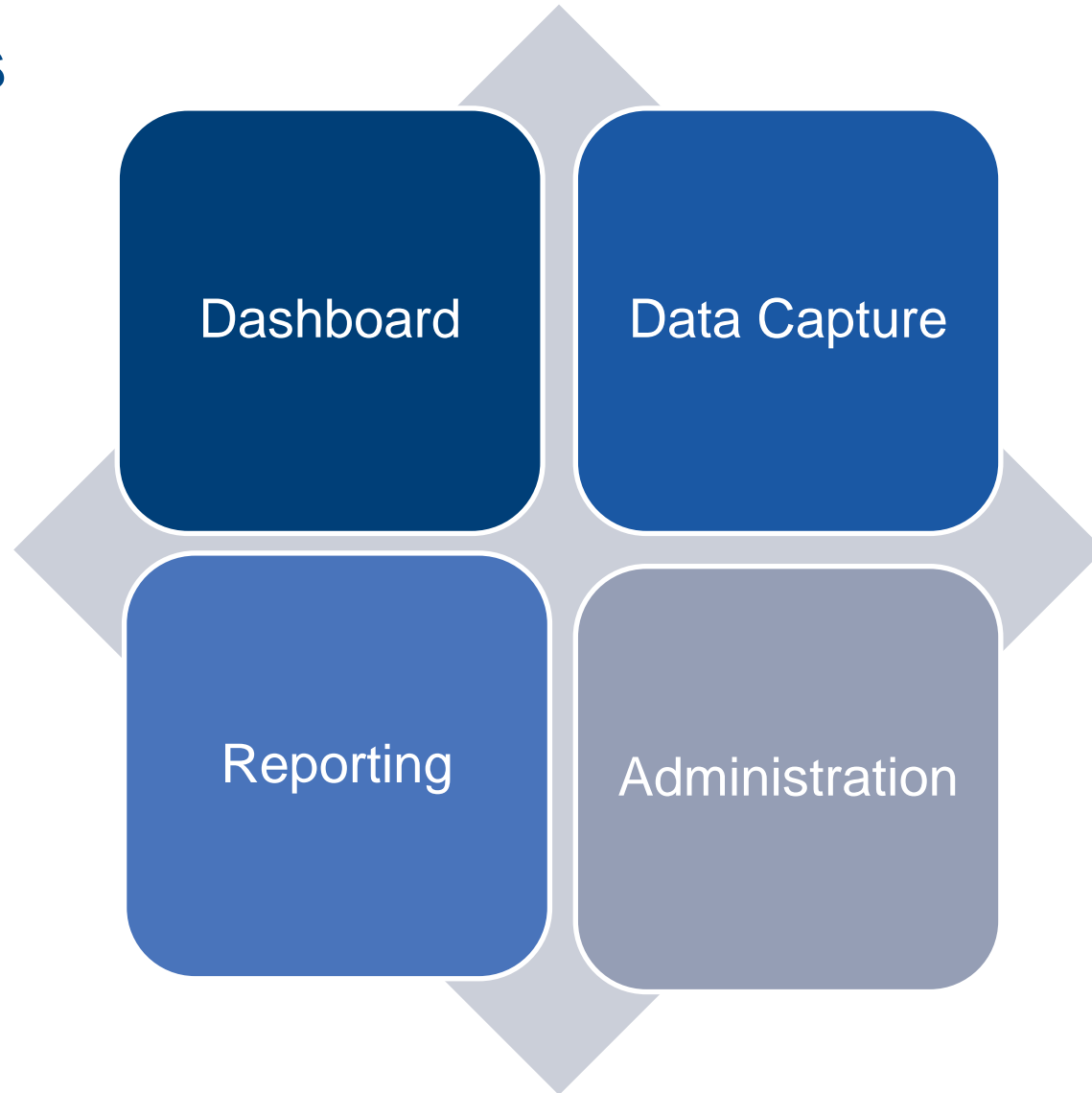
ID	Code	Name	Active	Room code	Mon - Fri	Mon - Fri	Weekend	Weekend
					Day shift	Back shift	Day shift	Back shift
834657	NE568	Ward 2 DSR	Yes	A12	X	X	X	X
834653	NE564	Clinette	Yes	A3		X		
855930	NH118	Clinette WC	Yes	A3		X		
834609	NE415	Room 20 WC	Yes	A3	X	X	X	X
834612	NE418	Room 19 WC	Yes	A3	X	X	X	X
834613	NE419	Room 18 WC	Yes	A3	X	X	X	X
855925	NE452	Room 16 WC	Yes	A3	X	X	X	X
855923	NE455	Room 15 WC	Yes	A3	X	X	X	X
855921	NE457	Room 14 WC	Yes	A3	X	X	X	X
855919	NE461	Room 12 WC	Yes	A3	X	X	X	X
855911	NE464	Room 11 Shower	Yes	A3	X	X	X	X
855912	NE465	Room 11 WC	Yes	A3	X	X	X	X

NHS Lanarkshire

1. introduction of system into the environment
2. basic fundamentals
3. practical lessons
4. flexibility
5. resource requirement
6. what do we want to achieve



Basic Functions



Basic Functions- System Demo

<https://app6.synbiotix.com/Lanarkshire/Login.aspx?signedOut=true>



Next steps

Lanarkshire

- continue with concept
- staff engagement
- wider clinical engagement
- further roll out

HFS

- ongoing support
- build knowledge
- full review

Developer

- manage system
- ongoing support
- key development



Questions ?

