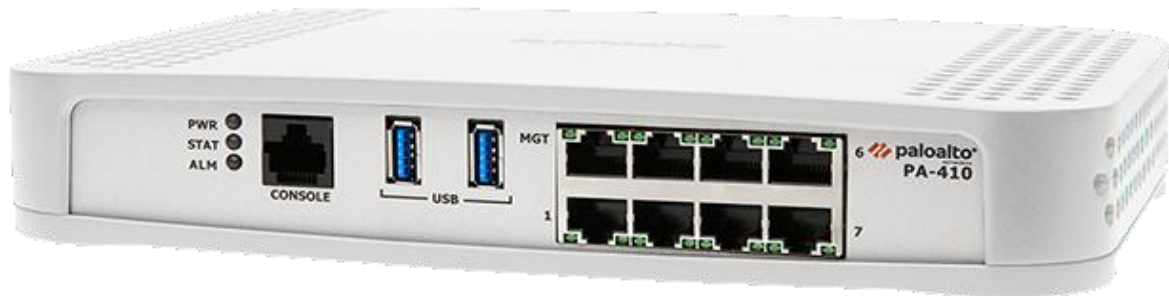


## **SWAN 2 Remote Networks Palo Alto 410 Firewall Install guide**



### **Installation guide**

1. Place the Palo Alto next to the broadband router or switch
2. Place the network cable in Port 1 of the Palo Alto
3. Place the other end directly into your broadband router in a LAN port or into your switch
4. Power on Palo Alto
5. Wait for 20 minutes until the following lights are illuminated green:
  - PWR
  - STAT
  - Port 1 right
  - Port 1 left (flashing)
6. Make sure routes have been added to all PCs and server
7. Now try and access and login to NHS services i.e. eSchedules ([www.bo.scot.nhs.uk](http://www.bo.scot.nhs.uk)) or SCI-Gateway ([www.scigw.scot.nhs.uk/spalive/signin](http://www.scigw.scot.nhs.uk/spalive/signin))